

1

2

3

4

A

A

B

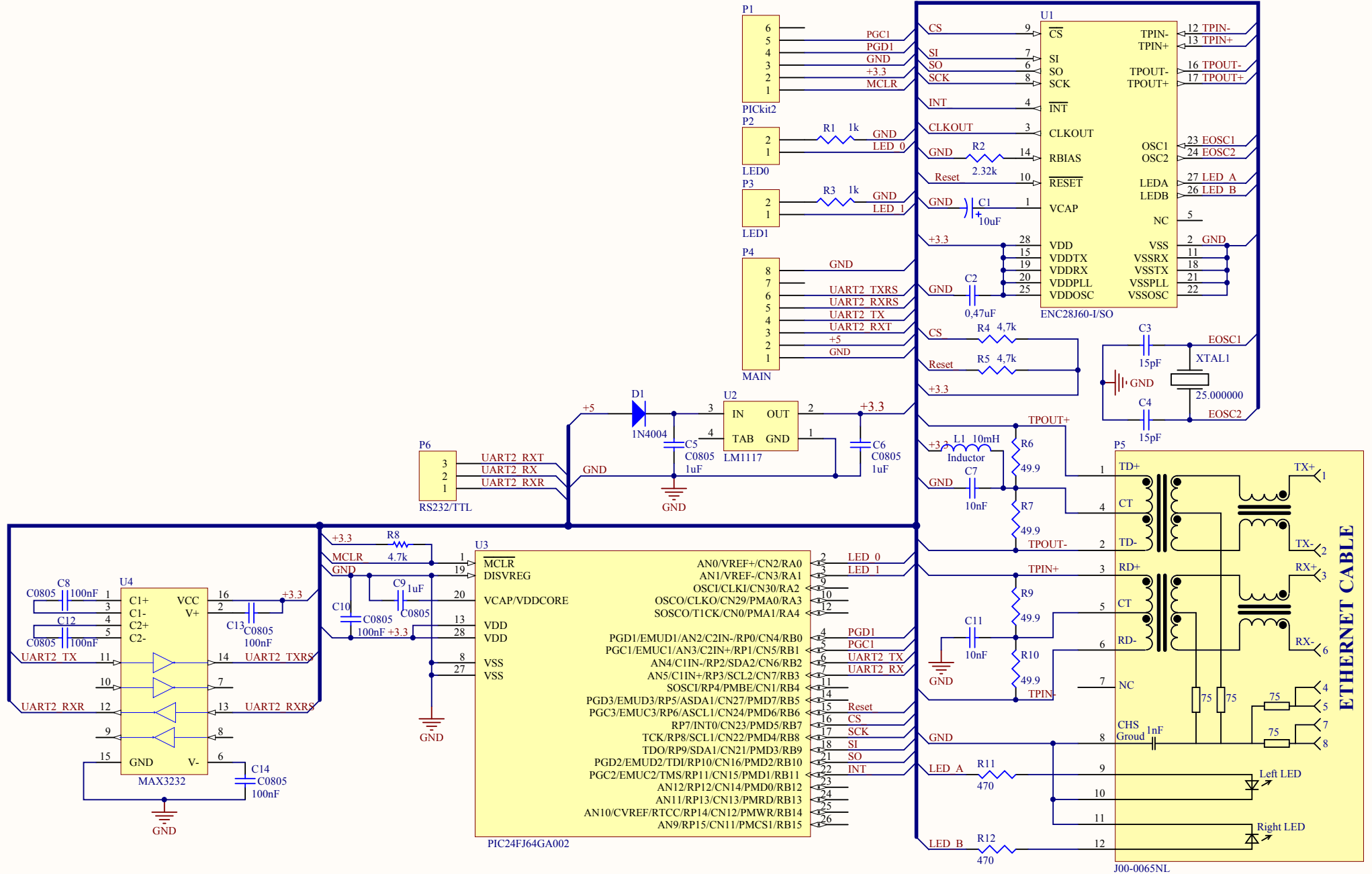
B

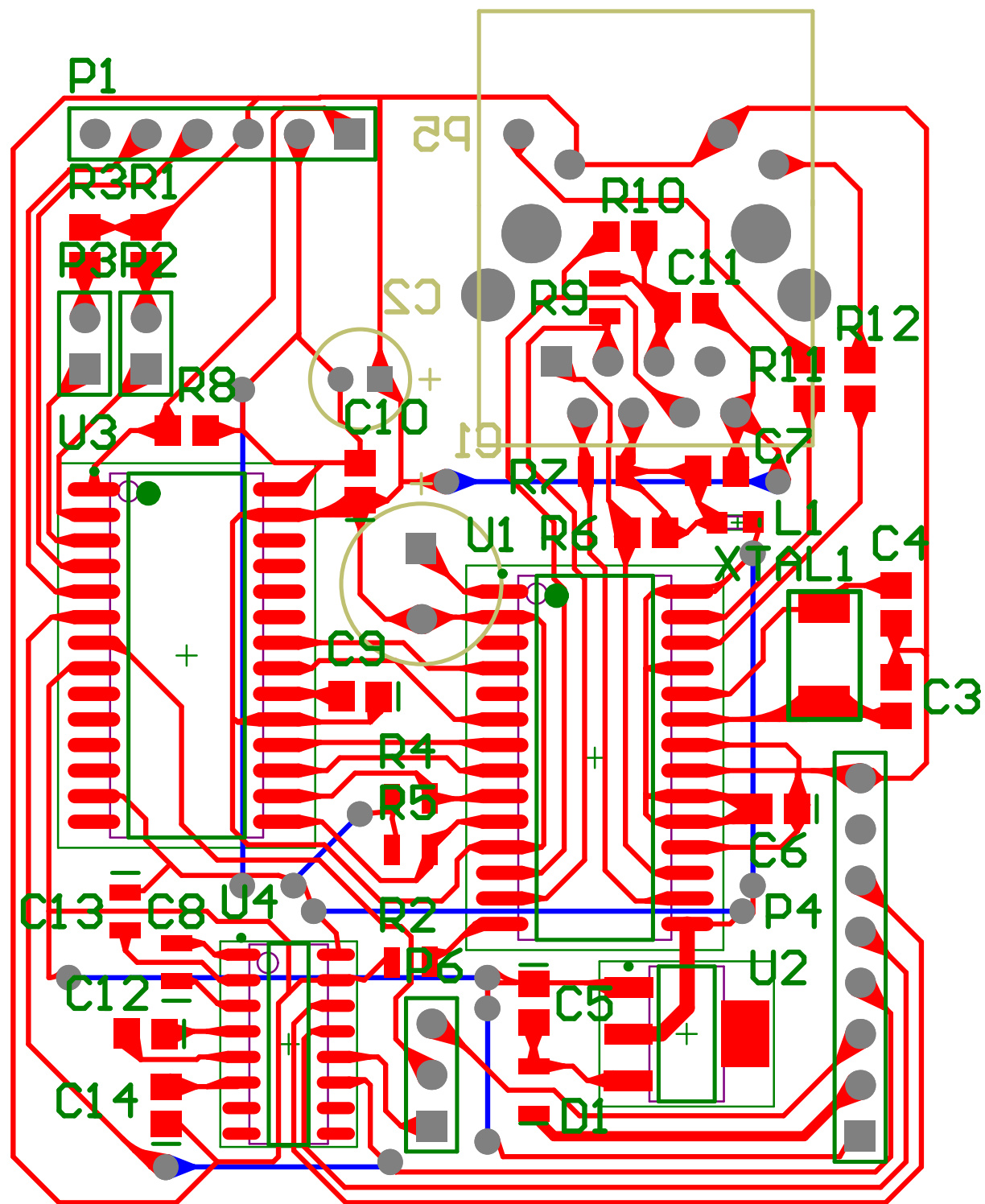
C

C

D

D





# Bill of Materials

<Parameter Title not found>

Source Data From:	Eth2UART.PrjPcb
Project:	Eth2UART.PrjPcb
Variant:	None

Creation Date:	25.04.2011	21:03:39
Print Date:	25-Apr-11	9:03:43 PM

Footprint	Comment	LibRef	Designator	Description	Quantity
CAPPR3.5-8X20	10uF	EKB00BA133S0	C1	Aluminum Electrolytic Capacitor, Radial Style with Long Leads: 3.3uF, 200V	1
CAPPR2-5x6.8	Cap	Cap	C2	Capacitor	1
6-0805	Cap	Cap	C3, C4, C7, C11	Capacitor	4
0805	C0805	C0805	C5, C6, C8, C9, C10, C12, C13, C14	Ceramic Chip Capacitor - Standard	8
0805	1N4004	1N4004	D1	1.0 Ampere General Purpose Rectifier	1
INDC1005AL	Inductor	Inductor	L1	Inductor	1
HDR1X6	PICKit2	Header 6	P1	Header, 6-Pin	1
HDR1X2	LED0	Header 2	P2	Header, 2-Pin	1
HDR1X2	LED1	Header 2	P3	Header, 2-Pin	1
HDR1X8	MAIN	Header 8	P4	Header, 8-Pin	1
StarJack 1x1 Tab Down RJ45	J00-0065NL	J00-0065NL	P5	1x1 Tab Down RJ45	1
HDR1X3	RS232/TTL	Header 3	P6	Header, 3-Pin	1
6-0805		Res3	R1, R2, R3, R4, R5, R10, R11, R12	Resistor	8
6-0805	Res3	Res3	R6, R7, R9	Resistor	3
6-0805	4.7k	ERJ2GE	R8	Thick Film Chip Resistor, 1 Ohm to 2.2M Ohm Range, 5% Tolerance, 0402 Size, 0.063 W	1
SOIC-SO28_M	ENC28J60-I/SO	ENC28J60-I/SO	U1	Stand-Alone Ethernet Controller with SPI Interface, 28-Pin SOIC, Industrial Temperature	1
MP04A_N	LM1117	LM1117MP-3.3	U2	800mA Low-Dropout Linear Regulator	1
SOIC-SO28_M	PIC24FJ64GA02	PIC24FJ64GA02T-I/SS	U3	General Purpose 16-Bit Flash Microcontroller, 64KB Flash, 8KB SRAM, Pin SSOP, Industrial Temperature, Tape and Reel	1
NSO16_L	MAX3232	MAX3232CSE	U4	3.0V TO 5.5V, Low-Power, up to 1Mbps, True RS232 Transceiver Using Four 0.1uF External Capacitor	1
12SMX	25.000000	QUARTZ	XTAL1		1
					39

Approved	Notes